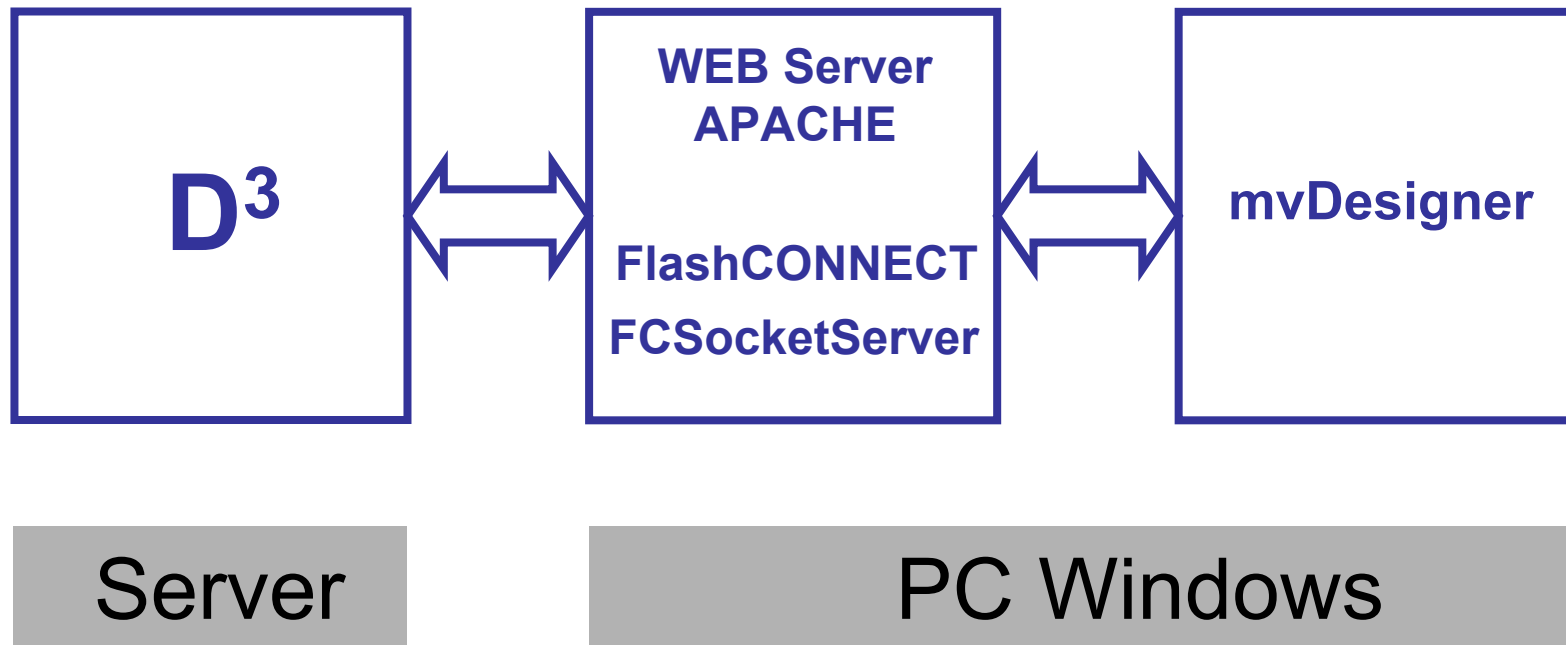




# ***mvDesigner***

**Developer install**

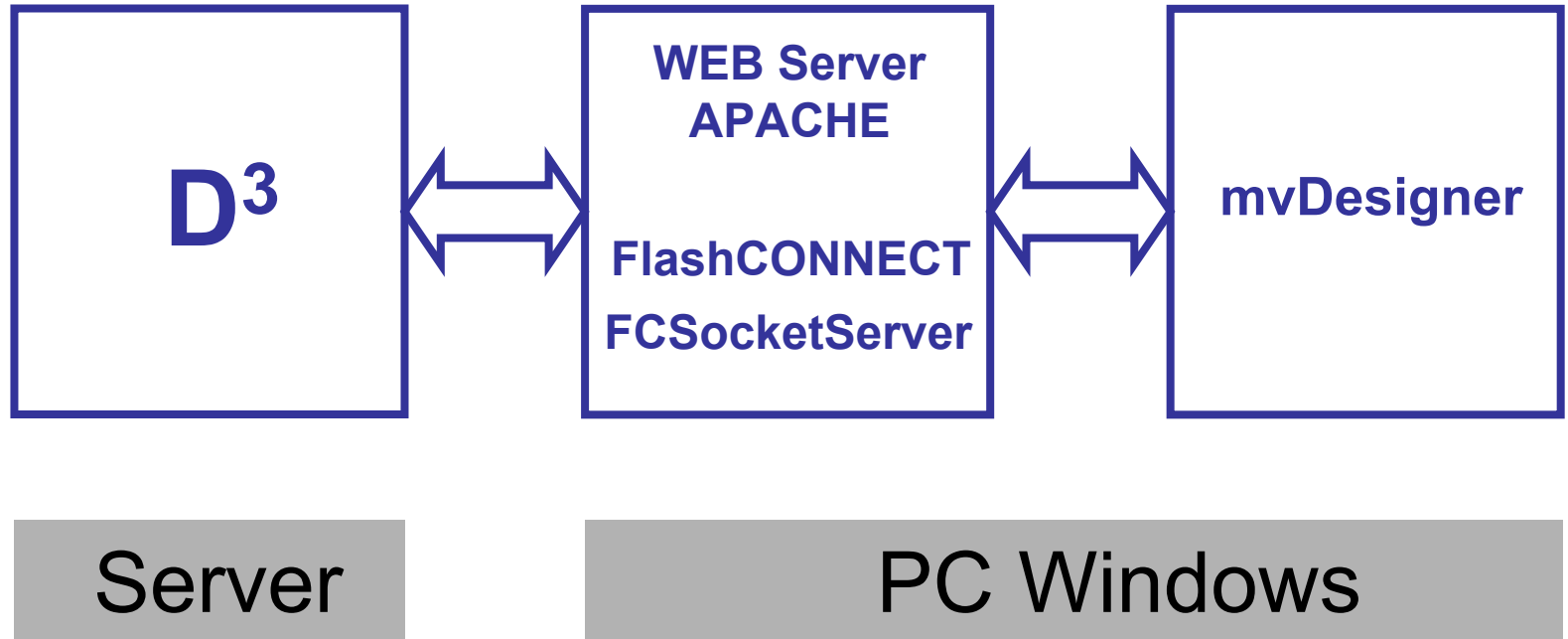
# Что нужно установить



**Setup  
FlashCONNECT**

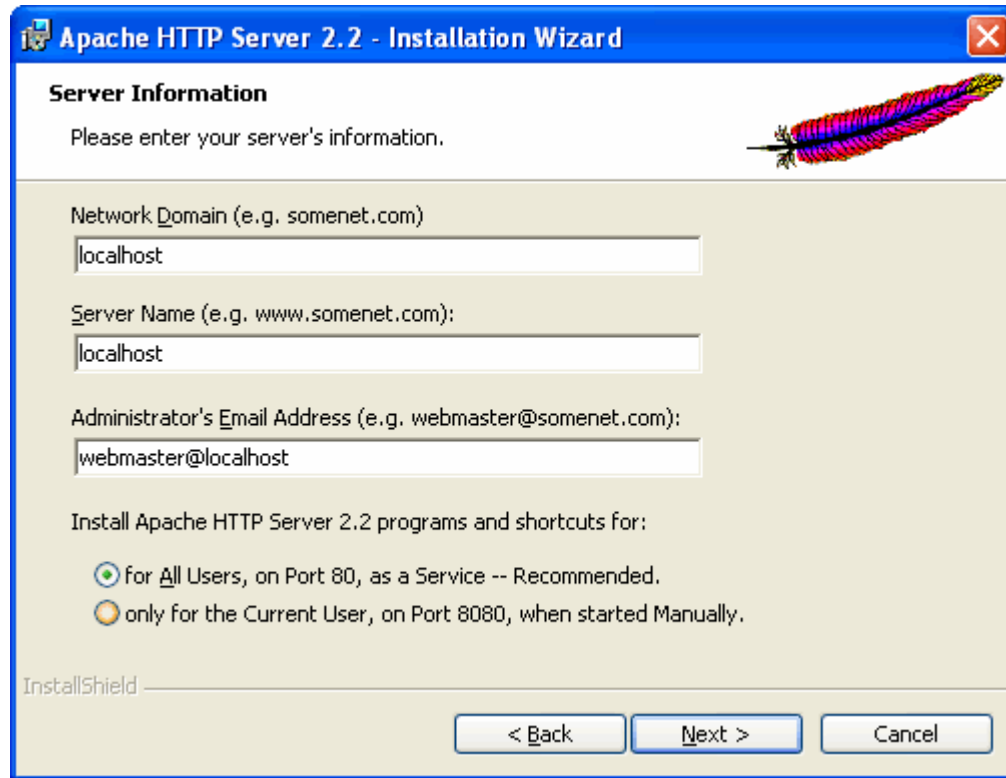
**Setup Apache, Java Runtime,  
FlashCONNECT, mvDesigner**

# Apache Web Server



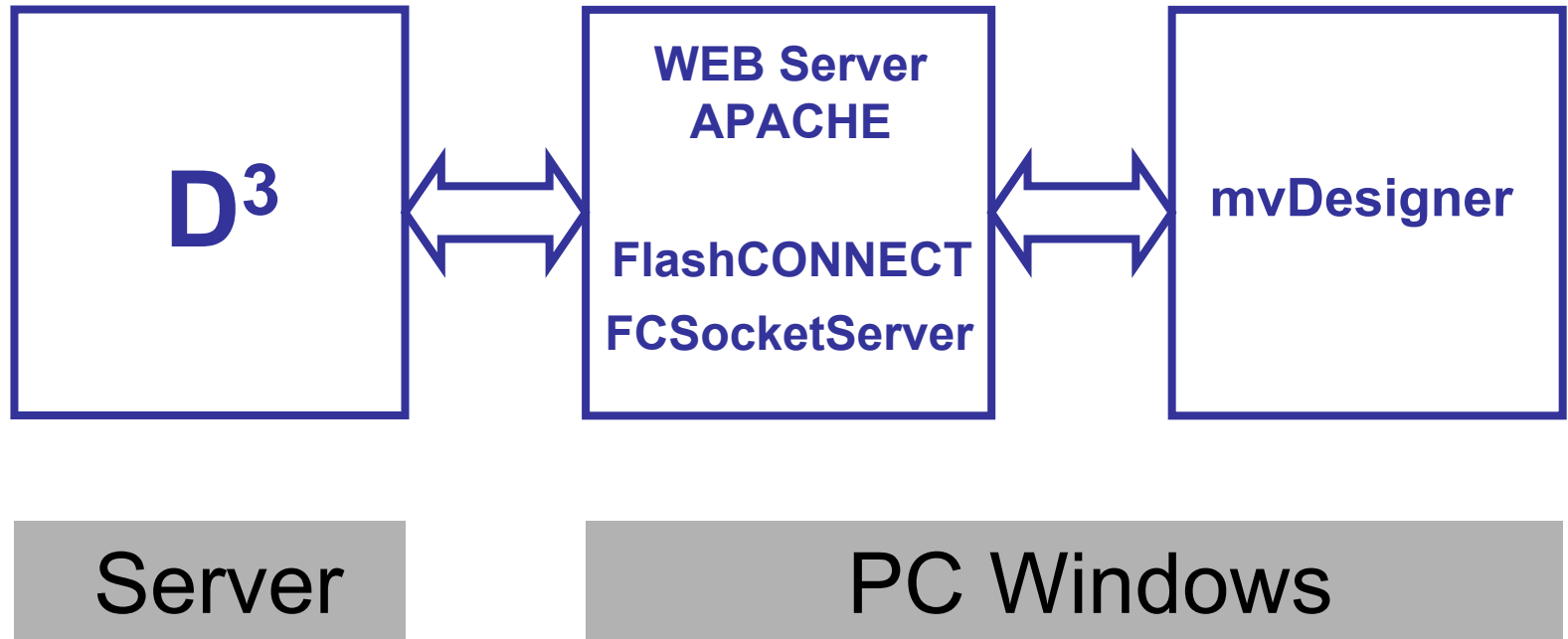
***apache\_2.2.4-win32-x86-no\_ssl.msi***

# Apache Install



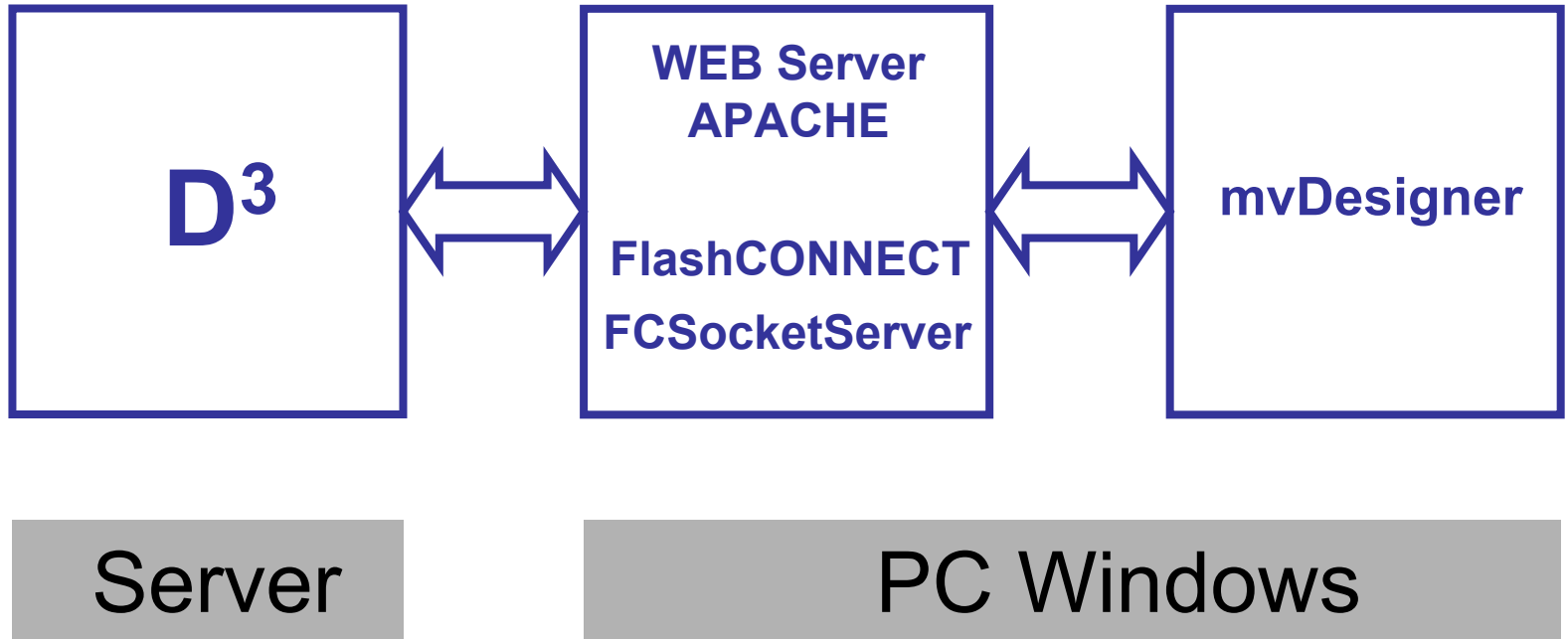
<b>Domain</b>	<b>localhost</b>
<b>Server</b>	<b>localhost</b>
<b>Email</b>	<b>webmaster@localhost</b>

# Java Runtime Environment



***j2re-1\_4\_2\_01-windows-i586.exe***

# FlashCONNECT



***flashconnect\_370.exe***

# W3LIBRARY и FCCGI.EXE



C:\Program Files\  
RainingData\FlashCONNECT



WebContent



FCCGI.EXE



C:\Program Files\  
Apache Software Foundation\  
Apache2.2\HTDOCS



W3LIBRARY

COPY  
RENAME



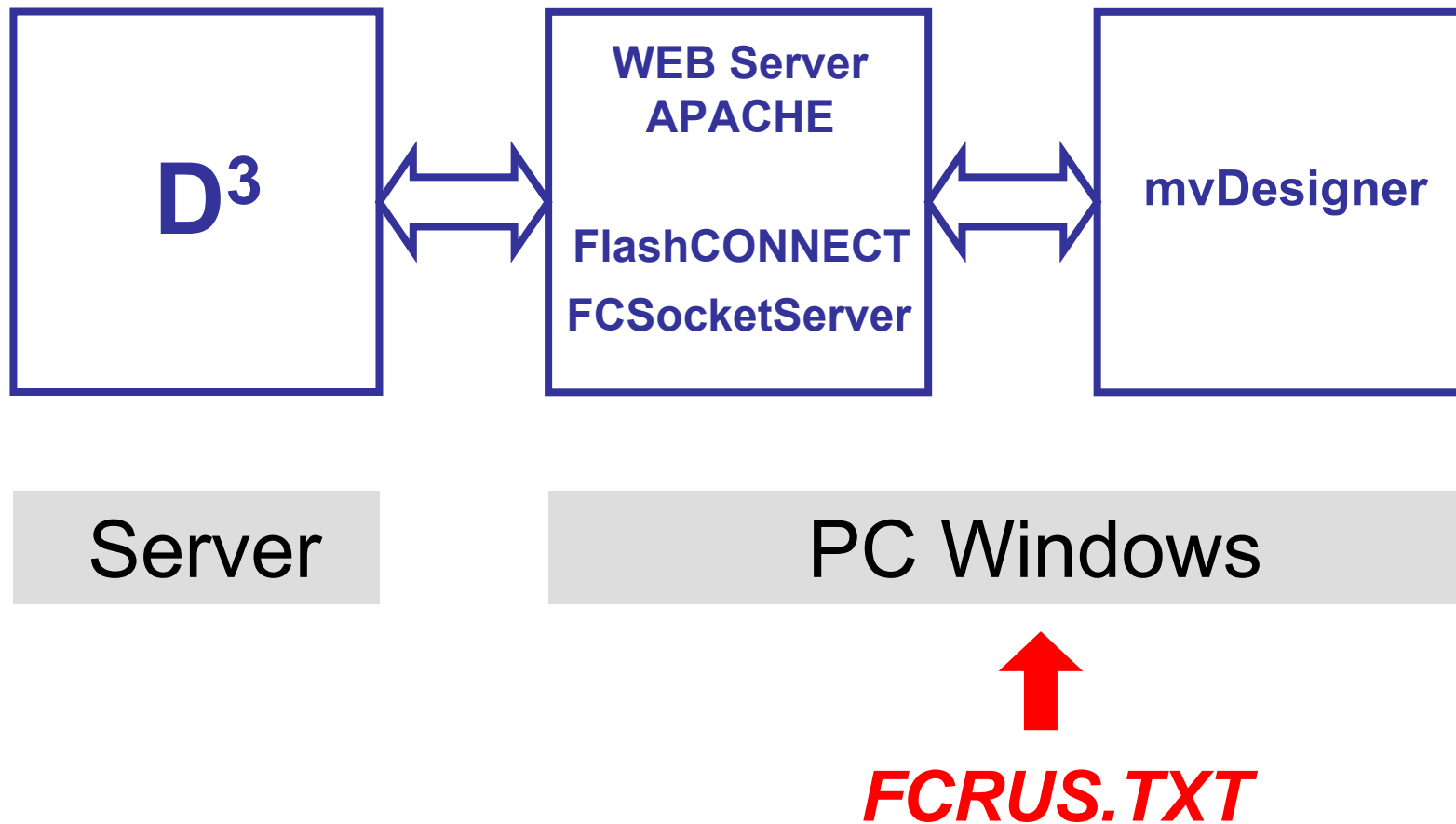
C:\Program Files\  
Apache Software Foundation\  
Apache2.2\CGI-BIN



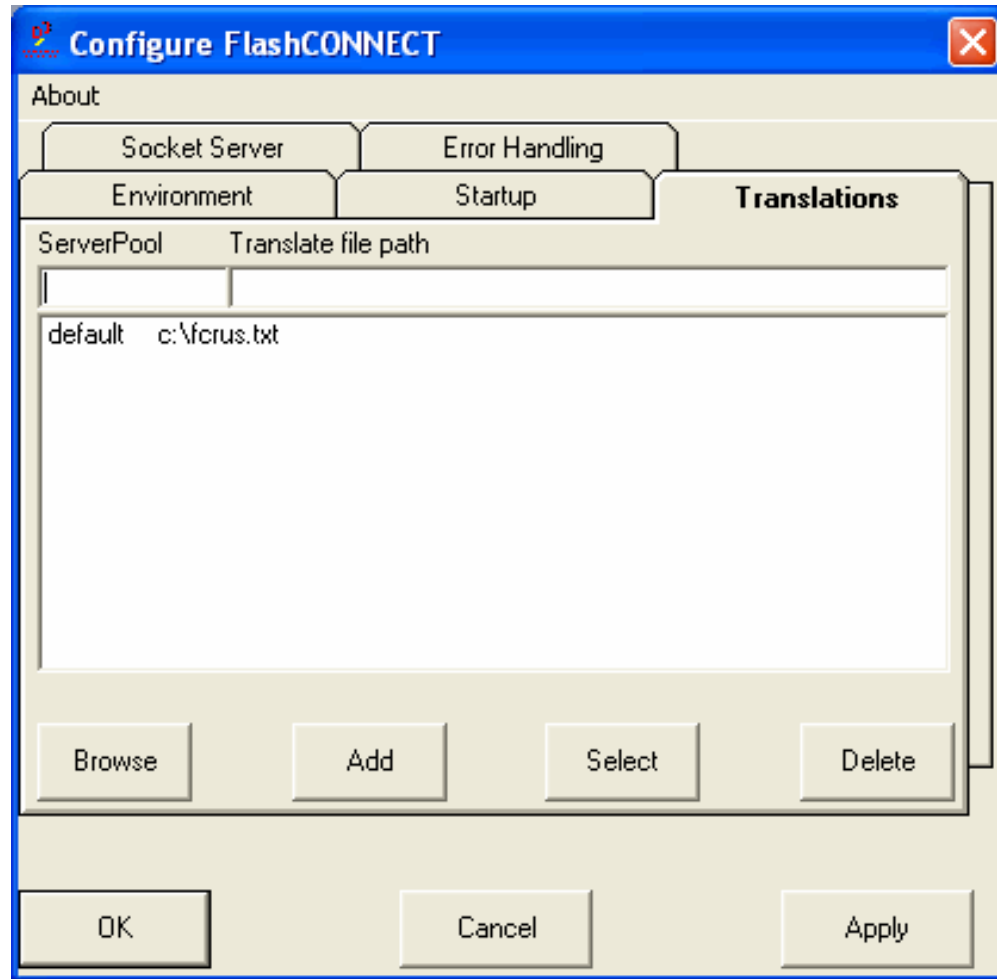
FCCGI.EXE

COPY

# Настройка FlashCONNECT



# Настройка FlashCONNECT



**Необходим рестарт службы  
FlashCONNECT Service**

# FlashCONNECT Socket Server

## 1. Установка пути к файлу jvm.dll

Панель управления >

Система >

Дополнительно >

Переменные среды >

Path

**PATH=....;C:\Program Files\  
Java\j2re1.4.2\_01\bin\client**

**Необходима перезагрузка Windows**

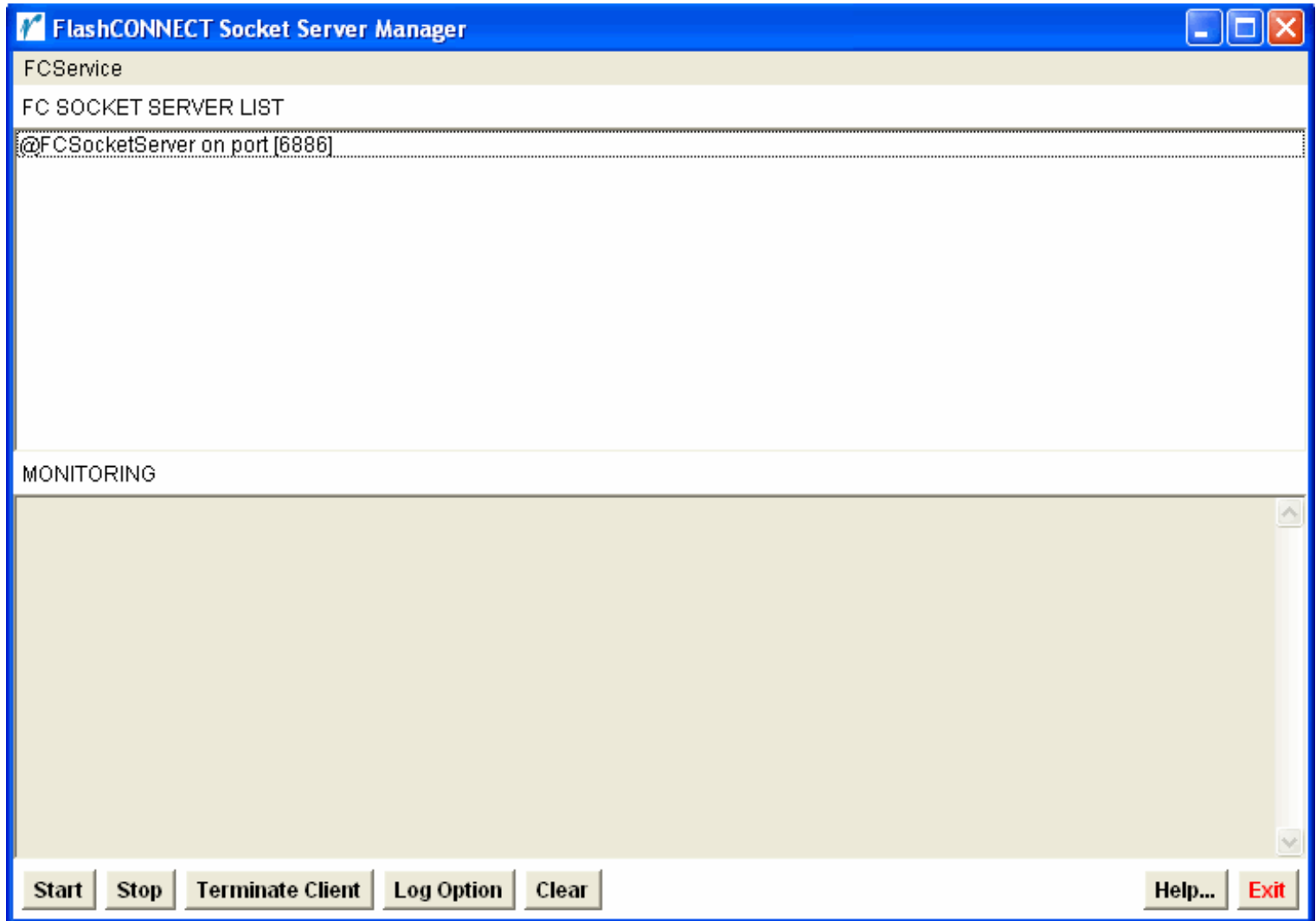
# FlashCONNECT Socket Server

## 2. Установка службы FCSocketService

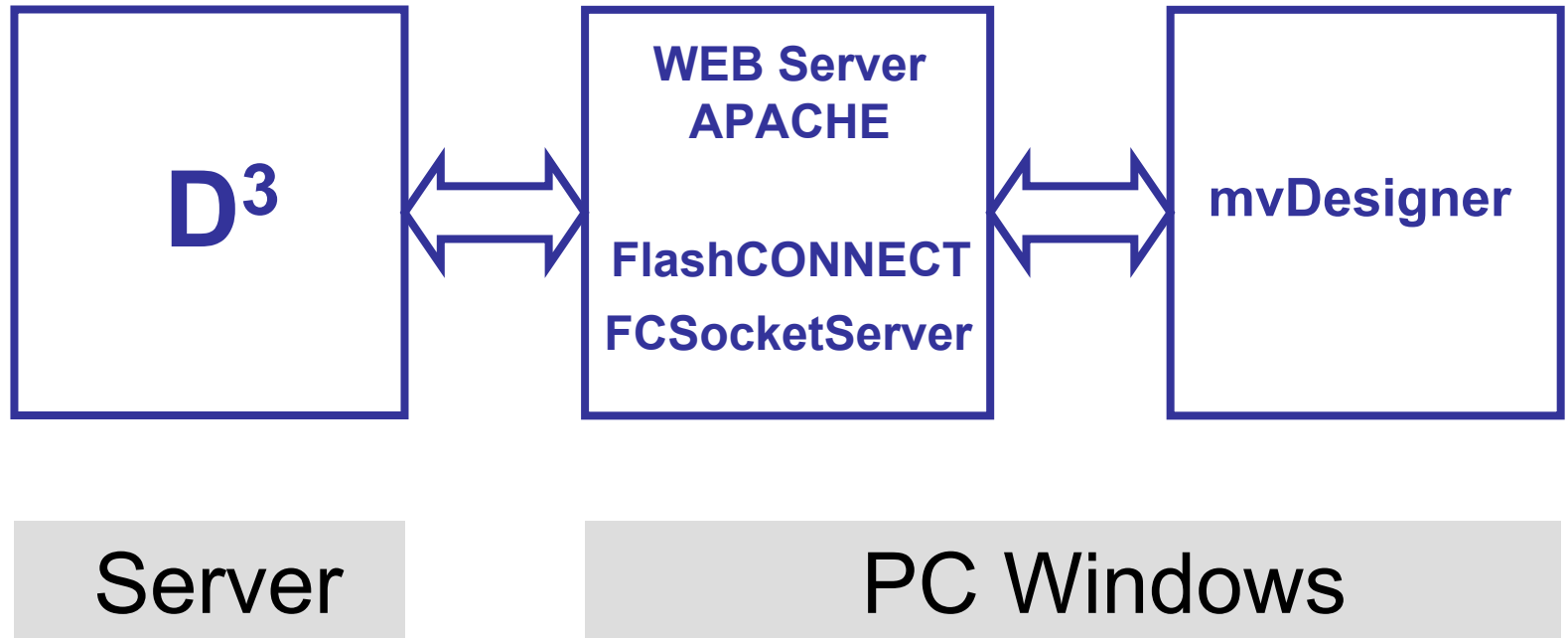
```
C:\WINDOWS\SYSTEM32>
```

```
FCSocketServer.exe –install
```

# Запуск службы FlashCONNECT Socket Server



# Установка счета WWW



*flashconnect\_370\_d3.d3p*

# Настройка FlashCONNECT в счете WWW

1	to www	Вход в счет FlashCONNECT
2	U W3CONFIG DEFAULT	<del>127.0.0.1</del> 192.168.1.15 <- адрес Web сервера с FlashCONNECT
3	m	Меню FlashCONNECT
4	9	Активация FlashCONNECT
5	1	Запуск фантомов FlashCONNECT
6	3	Проверка состояния фантомов FlashCONNECT

# Состояние фантомов FlashCONNECT

```
d3linux
File Edit View Diagnose Communicate Transfer Macros Help

OfWWW-STATUS 13:16:23 20 May 2007 Page 1
  Server Pool/   Line/ User/   Time/
Idx Host Name    Port  Status  Date    Application
-----
  0 default      18
  127.0.0.1     1505 Input   05/20/07
0018 0002C0C4 FF10 000018  P  PX_RESUME:000

The FlashCONNECT Monitor is running on port : 17

Press <Enter> to continue... _
```

**Input – нормальное состояние фантома**

# Проверка работы FlashCONNECT

1. <http://localhost/w3library>
2. [CODE EXAMPLES]
3. D3 System ID Program
4. Run D3 System ID

# Проверка работы FlashCONNECT

FlashCONNECT - Mozilla Firefox

Файл Правка Вид Журнал Закладки Инструменты Справка

Назад Вперёд Обновить Остановить Домой

http://localhost/w3library/samples.html

Google

**RainingData** Technology for *Innovative Solutions*

FlashCONNECT - WWW PROGRAMMERS ONLINE REFERENCE DOCUMENTATION NEW FEATURES FlashCONNECT ADMIN **CODE EXAMPLES**

**FlashCONNECT®**  
**Code Examples**

- [Cookies](#)
- [Pragma](#)
- [Record Locking](#)
- [Event Driven Application](#)
- [IHELLO Program](#)
- [Banners and Web Page Elements](#)
- [Credit Card and Check Processing](#)
- [16-bit Extended Character & Support Translation](#)
- [Click-Throughs](#)
- [D<sup>3</sup> System ID](#)
- [Programming Example](#)
- [Template: Multiple Sections](#)

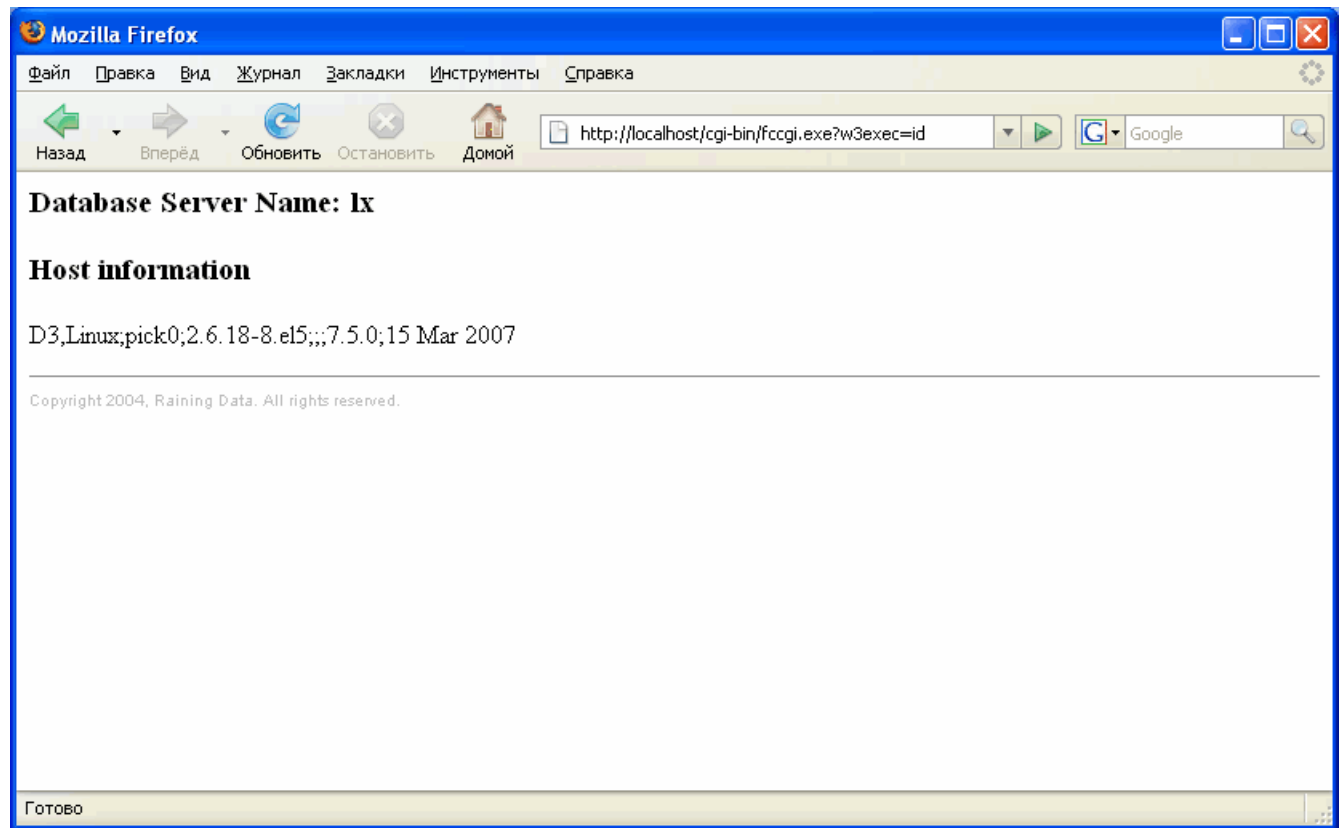
**FlashCONNECT Code Examples**

- [Cookies](#)
- [Pragma](#)
- [Record Locking](#)
- [Event Driven Application](#)
- [IHELLO Program](#)
- [Banners and Web Page Elements](#)
- [Credit Card and Check Processing](#)
- [16-bit Extended Character & Support Translation](#)
- [Click-Throughs](#)
- [D<sup>3</sup> System ID](#)
- [Programming Example](#)

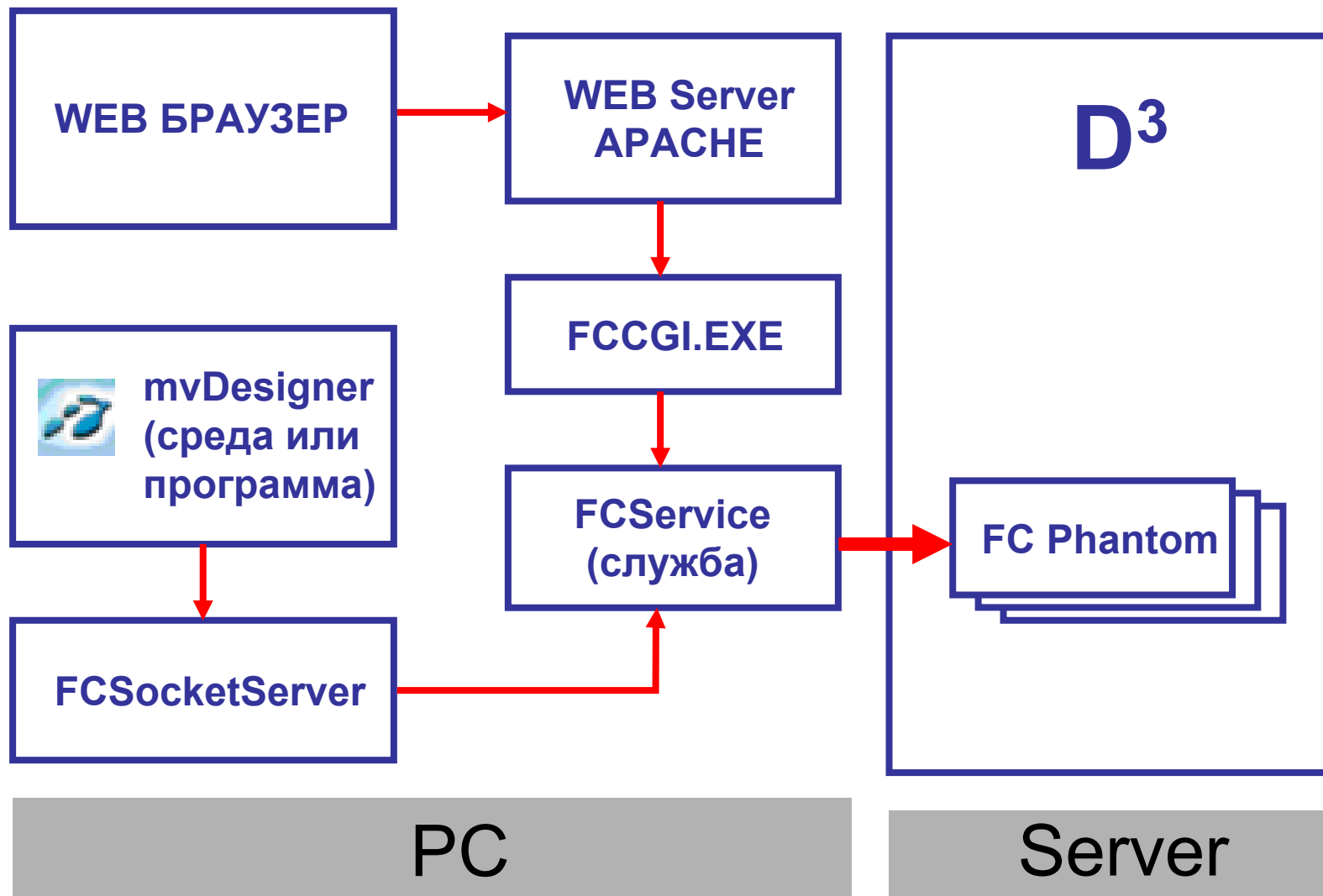
Готово

# Проверка работы FlashCONNECT

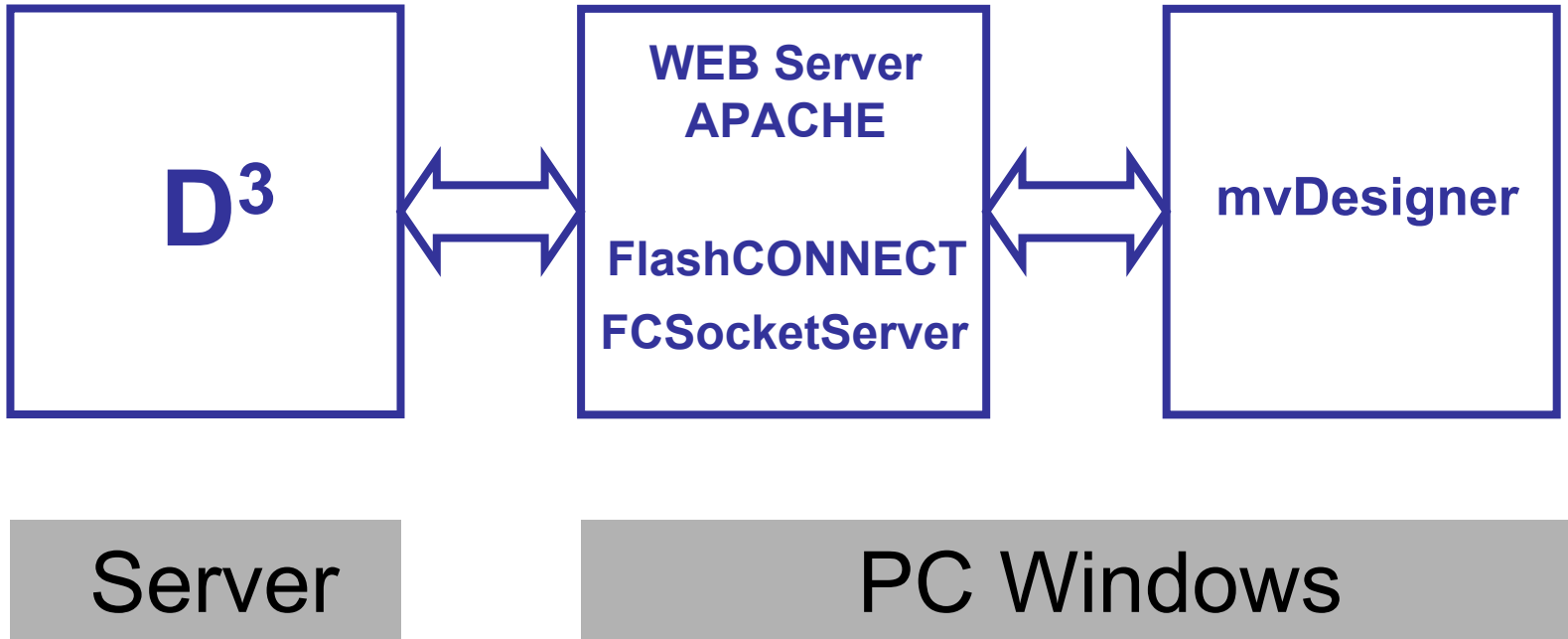
## Run D3 System ID program



# Подробная схема работы

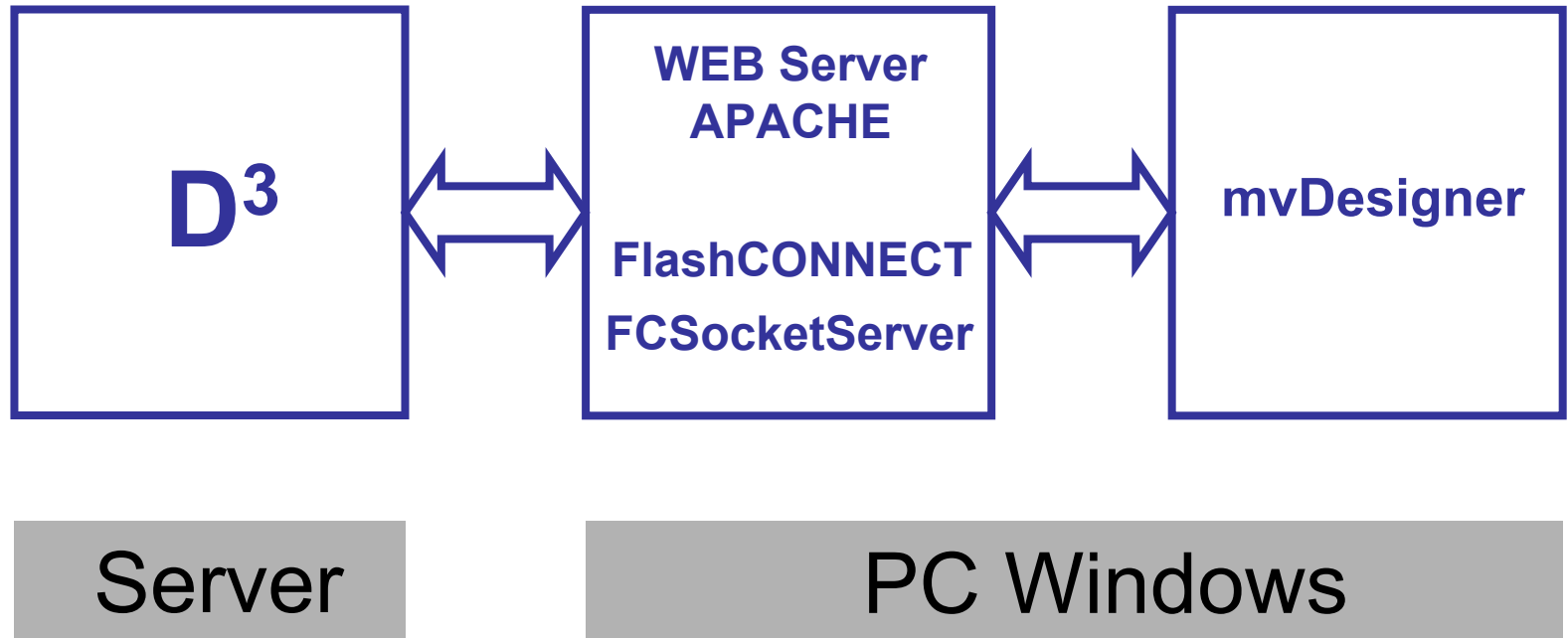


# Установка mvDesigner



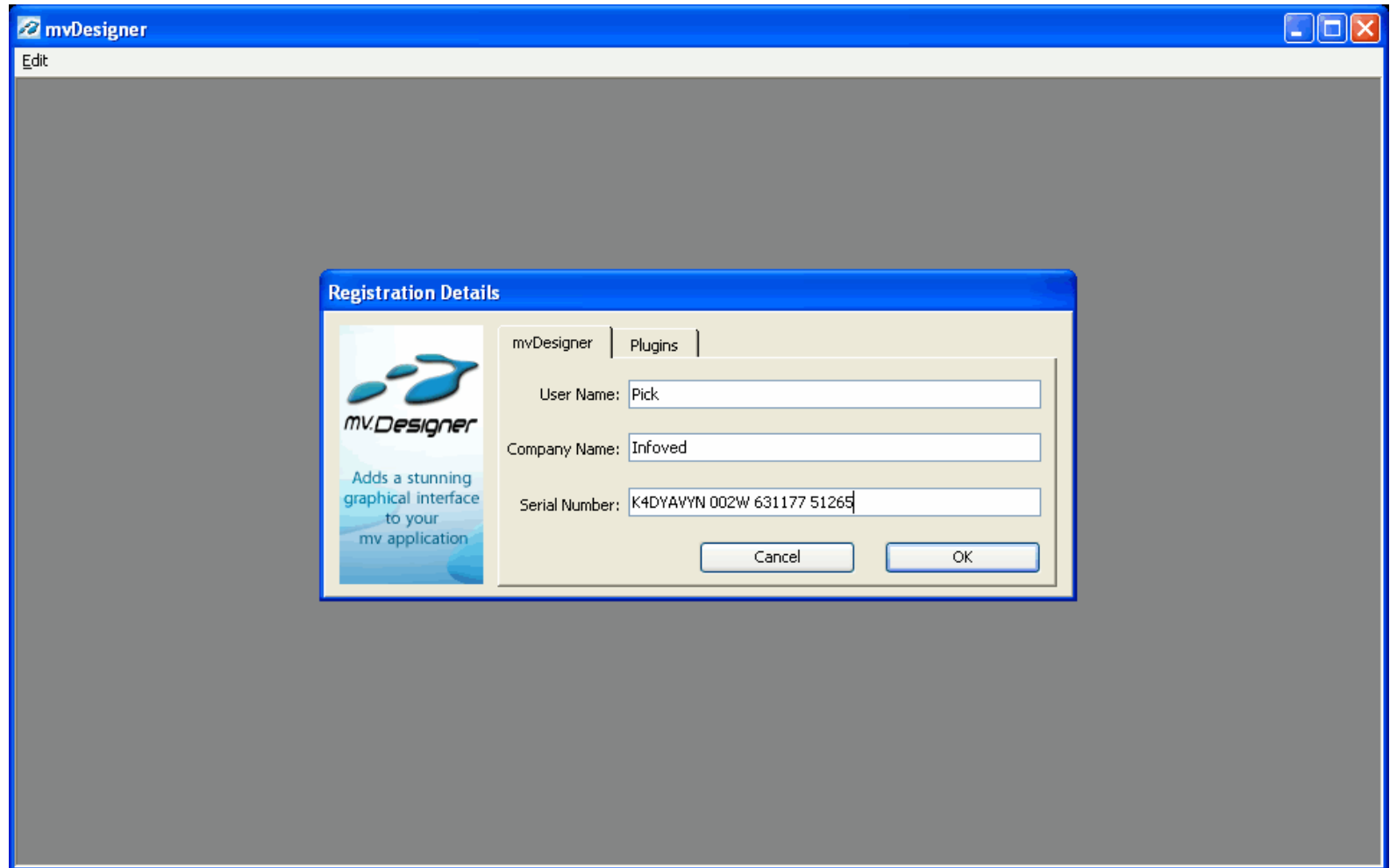
**Setup**

# mvDesigner Development



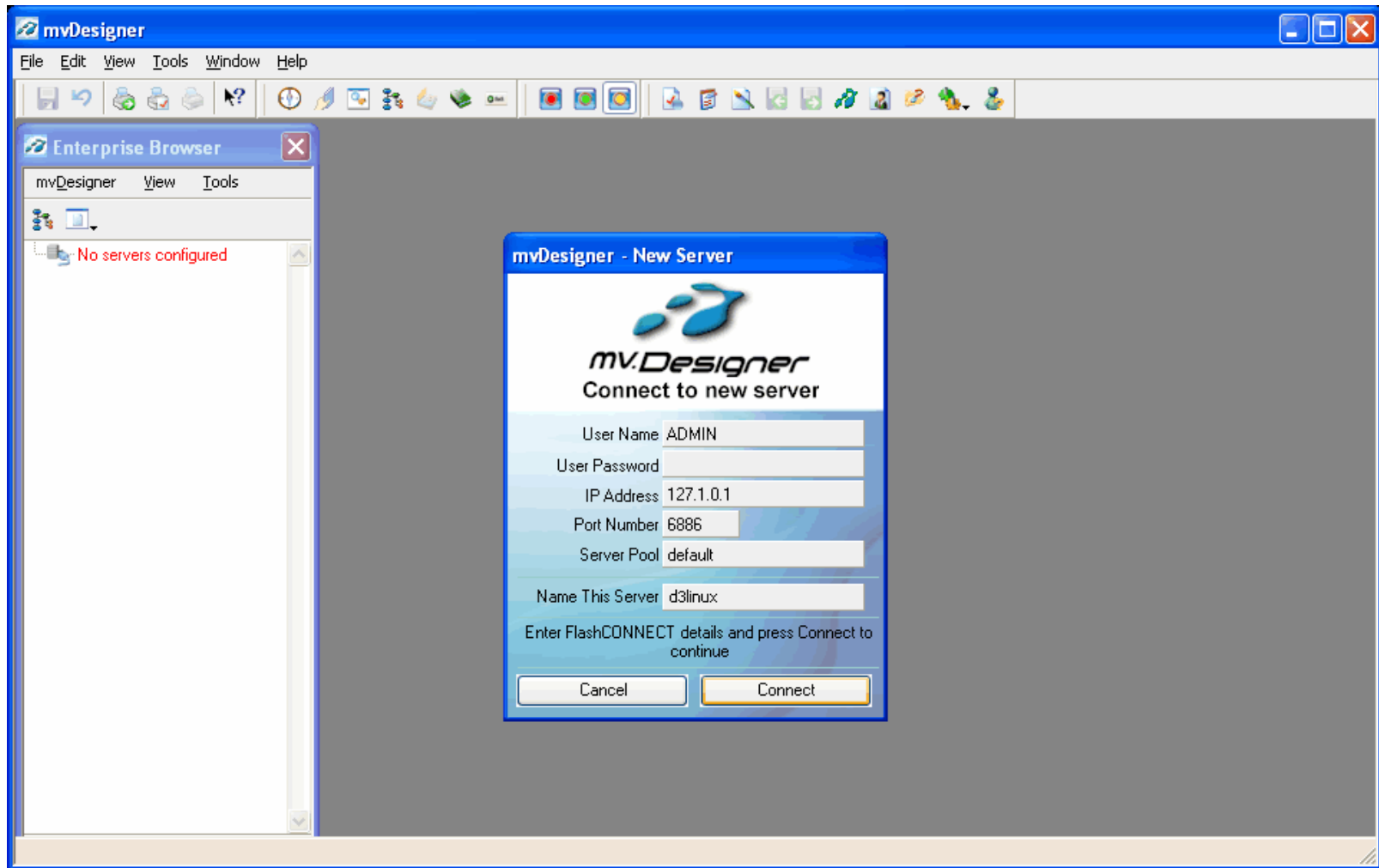
... \mvD30Win \Development \ **Setup32d.exe**

# mvDesigner Development (SDK) Serial Number



mvDesigner

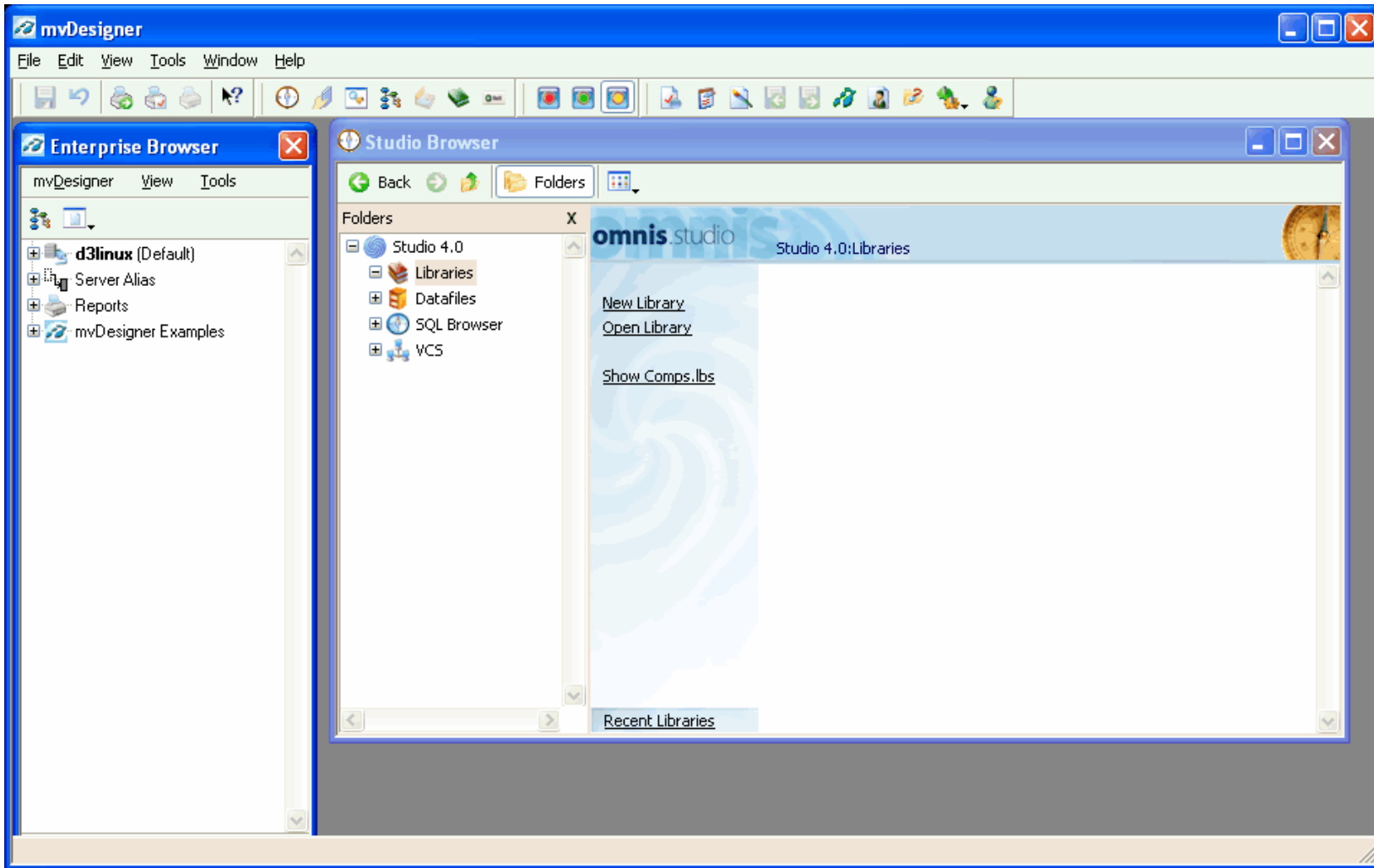
# Подключение mvDesigner



# Данные подключения

<b>User name</b>	<b>ADMIN</b>	<b>Имя пользователя FlashCONNECT</b>
<b>Password</b>		
<b>IP Adress</b>	<b>127.0.0.1</b>	<b>адрес где FC Socket Server</b>
<b>Port Number</b>	<b>6886</b>	<b>порт FC Socket Server</b>
<b>Server Pool</b>	<b>default</b>	<b>имя server pool FlashCONNECT</b>
<b>Name This Server</b>	<b>d3linux</b>	<b>название в списке подключений</b>

# mvDesigner



mvDesigner

# Настройка mvDesigner

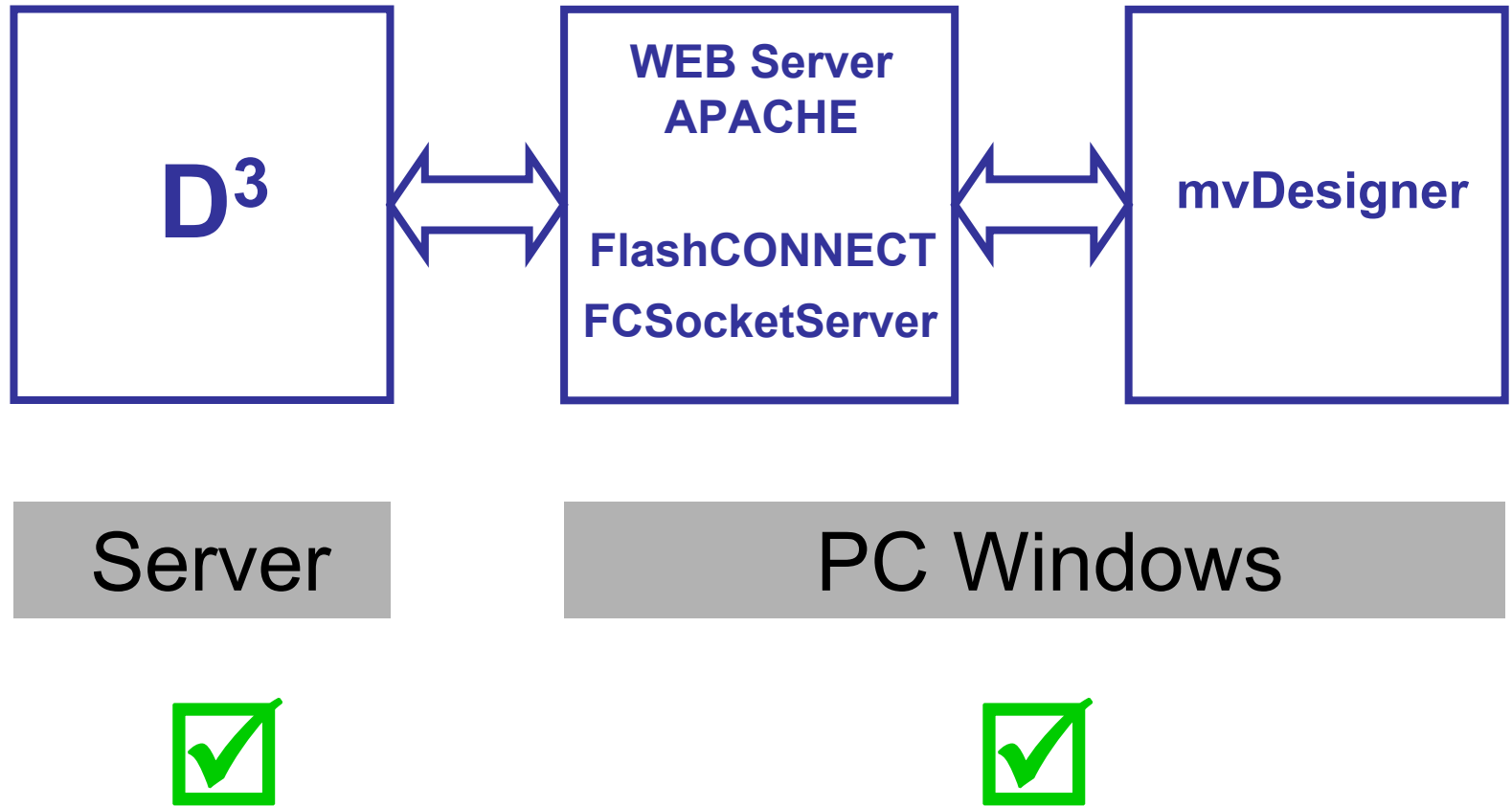
REGEDIT

HKEY\_LOCAL\_MACHINE\SYSTEM\  
CurrentControlSet\Control\Nls\CodePage

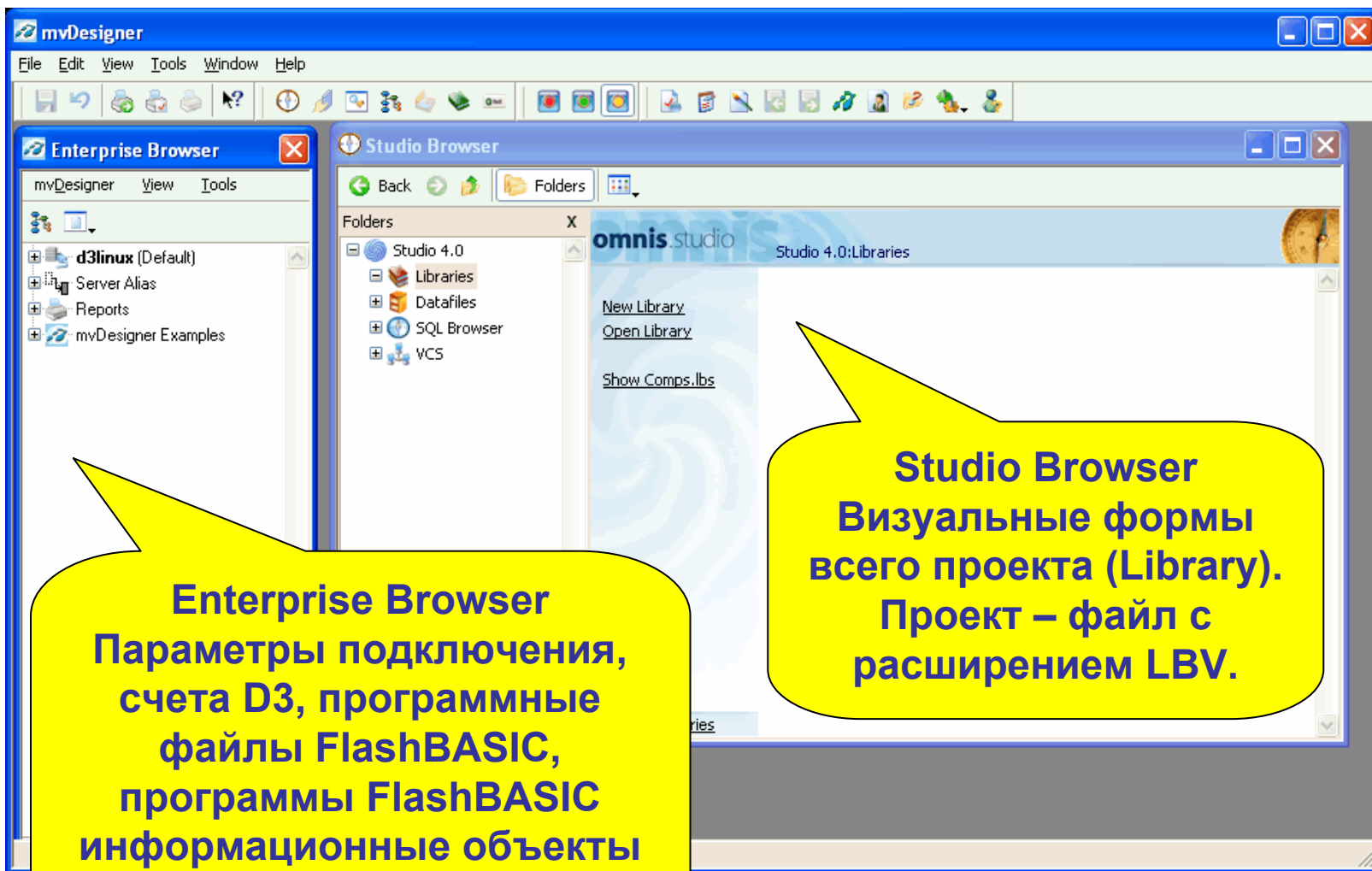
~~1252 = c\_1252.nls c\_1251.nls~~

**Необходима перезагрузка Windows**

# Что дальше ?



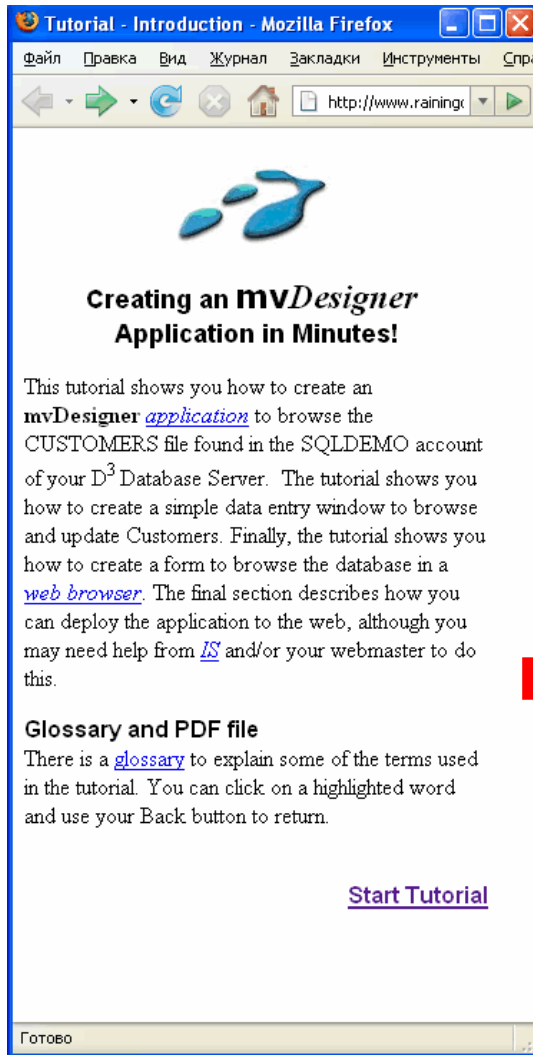
# Enterprise Browser, Studio Browser



**Enterprise Browser**  
Параметры подключения,  
счета D3, программные  
файлы FlashBASIC,  
программы FlashBASIC  
информационные объекты  
форм, события форм.

**Studio Browser**  
Визуальные формы  
всего проекта (Library).  
Проект – файл с  
расширением LBV.


# mvDesigner Tutorial



**Tutorial - Introduction - Mozilla Firefox**

Файл Правка Вид Журнал Закладки Инструменты Спра

http://www.rainingc



## Creating an mvDesigner Application in Minutes!

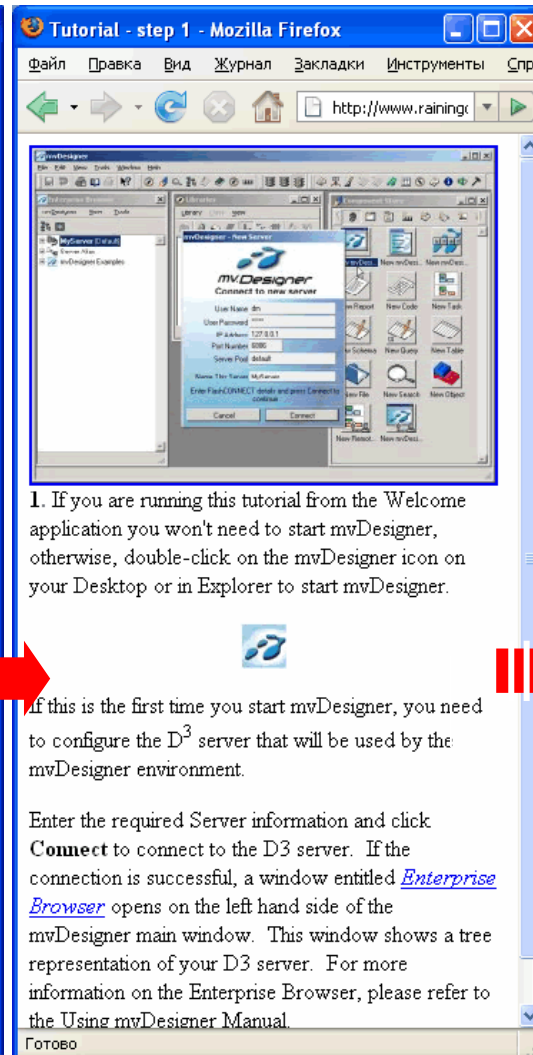
This tutorial shows you how to create an **mvDesigner application** to browse the CUSTOMERS file found in the SQLDEMO account of your D<sup>3</sup> Database Server. The tutorial shows you how to create a simple data entry window to browse and update Customers. Finally, the tutorial shows you how to create a form to browse the database in a **web browser**. The final section describes how you can deploy the application to the web, although you may need help from [IS](#) and/or your webmaster to do this.

**Glossary and PDF file**

There is a [glossary](#) to explain some of the terms used in the tutorial. You can click on a highlighted word and use your Back button to return.

[Start Tutorial](#)

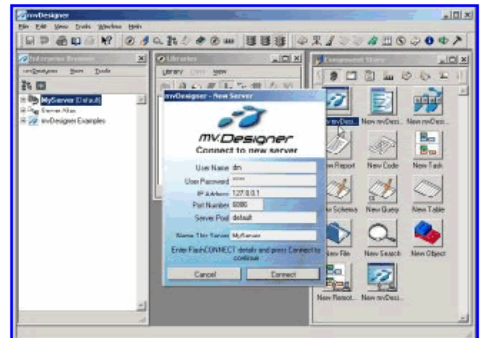
Готово




**Tutorial - step 1 - Mozilla Firefox**

Файл Правка Вид Журнал Закладки Инструменты Спра

http://www.rainingc



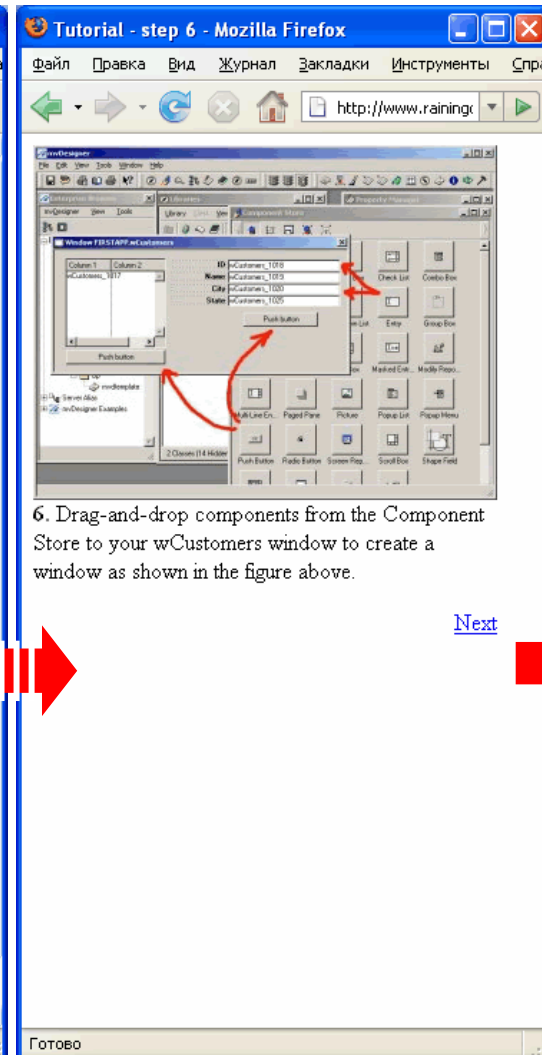
1. If you are running this tutorial from the Welcome application you won't need to start mvDesigner, otherwise, double-click on the mvDesigner icon on your Desktop or in Explorer to start mvDesigner.



If this is the first time you start mvDesigner, you need to configure the D<sup>3</sup> server that will be used by the mvDesigner environment.

Enter the required Server information and click **Connect** to connect to the D3 server. If the connection is successful, a window entitled **Enterprise Browser** opens on the left hand side of the mvDesigner main window. This window shows a tree representation of your D3 server. For more information on the Enterprise Browser, please refer to the **Using mvDesigner Manual**.

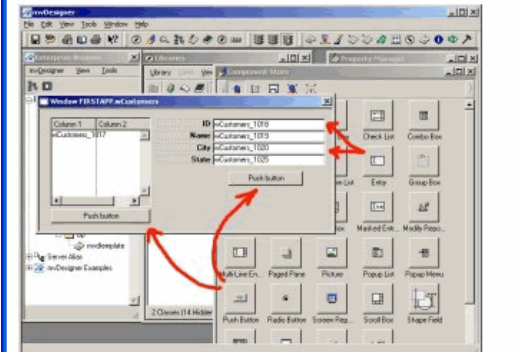
Готово



**Tutorial - step 6 - Mozilla Firefox**

Файл Правка Вид Журнал Закладки Инструменты Спра

http://www.rainingc



6. Drag-and-drop components from the Component Store to your wCustomers window to create a window as shown in the figure above.

[Next](#)

Готово

# mvDesigner Tutorial



Customers

Customer Name	ID
123 PC	41
ABC Computers	9
Best Computer Co	36
Better Bytes	11
<b>Better Computing</b>	<b>47</b>
Better Connection	16
Bits and Bytes Inc	5
Classic Computers	45

Refresh List

ID: 47  
Name: Better Computing  
City: Edmonton  
State: Alberta Canada  
Save Customer



Remote Form Test - rfCustomers - Microsoft Internet Explorer - [Working Offline]

File Edit View Favorites Tools Help

Back Forward Stop Home Search Favorites History Print Refresh

Address: rfCustomers.htm

Customer Name	ID
123 PC	41
<b>ABC Computers</b>	<b>9</b>
Best Computer Co	36
Better Bytes	11
Better Computing	47
Better Connection	16
Bits and Bytes Inc	5
Classic Computers	45
ClientGroup	52

Refresh List

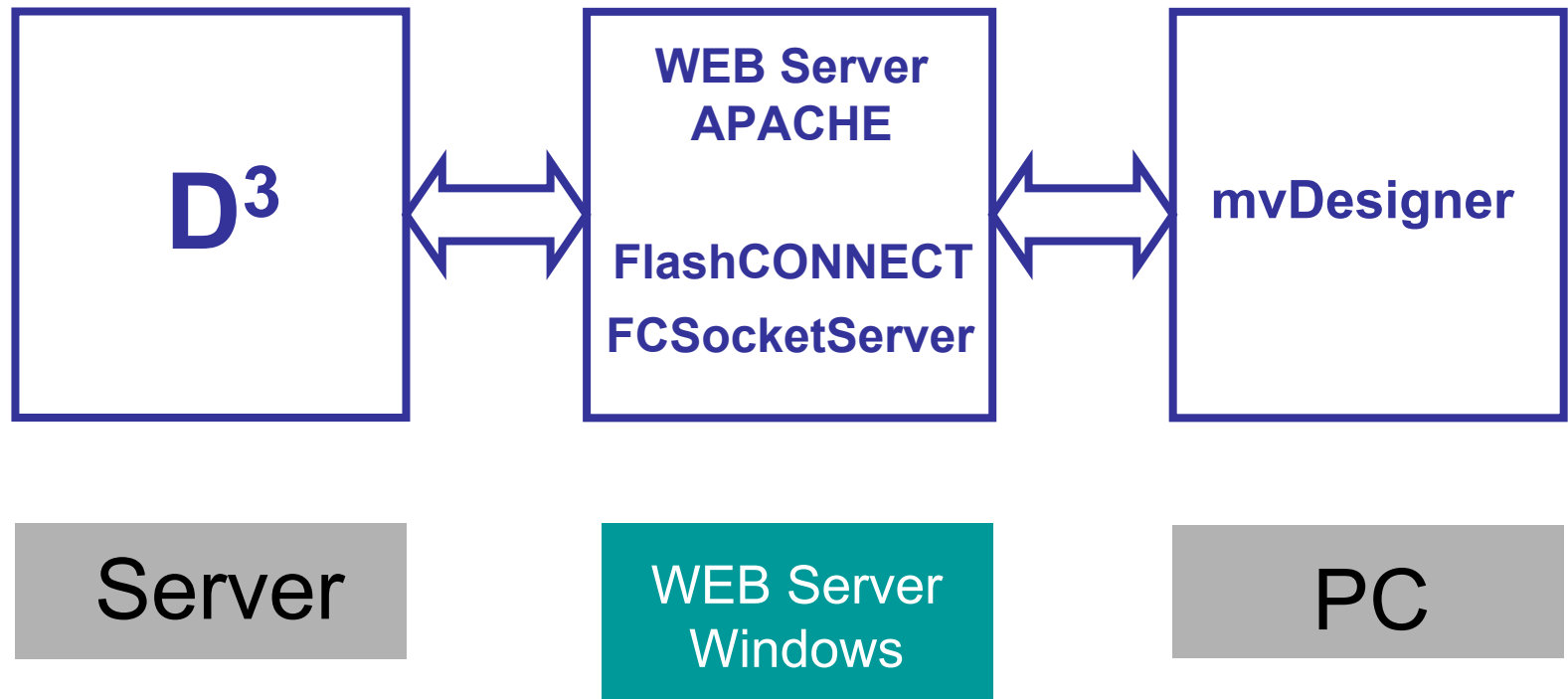
ID: 9  
Name: ABC Computers  
City: Laquna Hills  
State: California  
Save Customer

Done My Computer

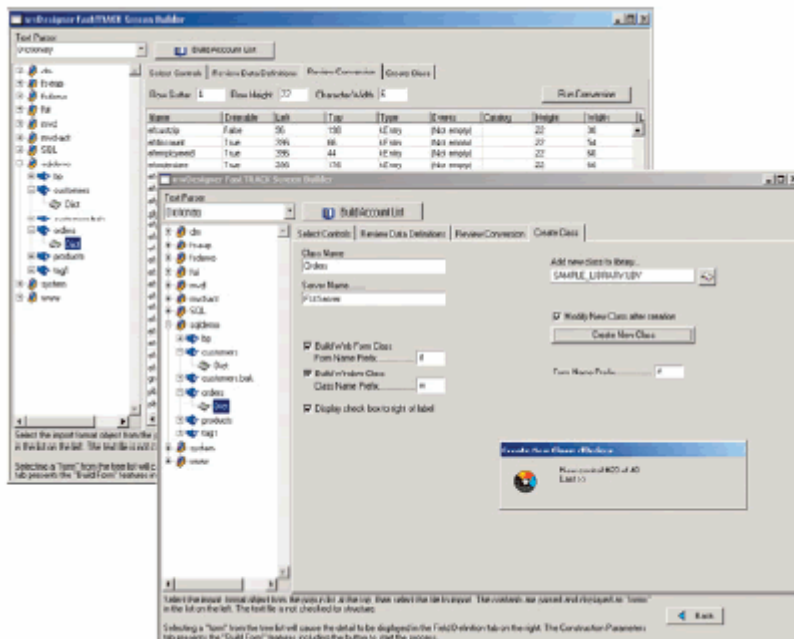
# Обучение

- Курс обучения Raining Data France
- Самостоятельно по документации на собственной задаче

# В промышленном режиме



# Возможности mvDesigner



1. Среда разработки  
WYSIWYG

2. GUI (client/server)

3. WEB GUI

4. Вывод в Word и Excel

5. Вывод в PDF, HTML

6. Платформы среды  
разработки:  
Windows и Linux

7. Платформы GUI  
приложений:  
Windows и Linux

8. Интеграция с SQL DB

9. Браузеры для WEB GUI:  
IE, Firefox

mvDesigner

# Спасибо за внимание Пожалуйста, вопросы

